



we are building a brave space



building a brave space

The campaign for Peace Over Violence

Peace Over Violence is launching a bold expansion campaign and building a brave space to respond to the needs of families and survivors of trauma throughout Los Angeles and beyond.

PEACE
OVER
VIOLENCE

a brave space

People come to Peace Over Violence for support, community, and expertise.

We are creating a brave space for the people who seek us out that supports their courage and honors their story. Every individual deserves to be received in a brave space.

A brave space is more than a physical space; a brave space is a practice where we come together to provide a supportive environment that allows for honest connection, healing and sharing.

The goal of brave space is to create inclusive environments that can achieve transformation and social justice.

Our brand-new metro headquarters will be a brave space for survivors, children, youth, families — a gift to our community.

be brave with us

Help us today by taking action and collectively responding to the needs of survivors and families throughout Los Angeles and beyond.

Help us continue the transformative prevention and intervention work we do with individuals, families, communities and society at large. Your generous donation allows you to take part in one of the most significant actions in radical love: **building survivors and families over violence**.

We are building a brave space. Join us in the campaign for Peace Over Violence.



a space to grow

Over the last five decades, we have grown and transformed to meet the needs of the diverse communities we serve, and now we are faced with a demand to grow yet again.

Our new metro headquarters will allow us to:

- Increase emergency and crisis-intervention programming, involving one-on-one, group and family services and counseling
- Establish the Peace Over Violence Children, Youth and Family Center to expand and promote violence prevention work
- Expand our capacity for trauma-informed and violence-prevention education and trainings

This new space has 11,474 square feet at one single location!

- Nearly 40% increase in overall space
- Twice as many rooms for meetings, training, counseling, and staff accommodation
- Ample parking for staff, clients, volunteers, and visitors

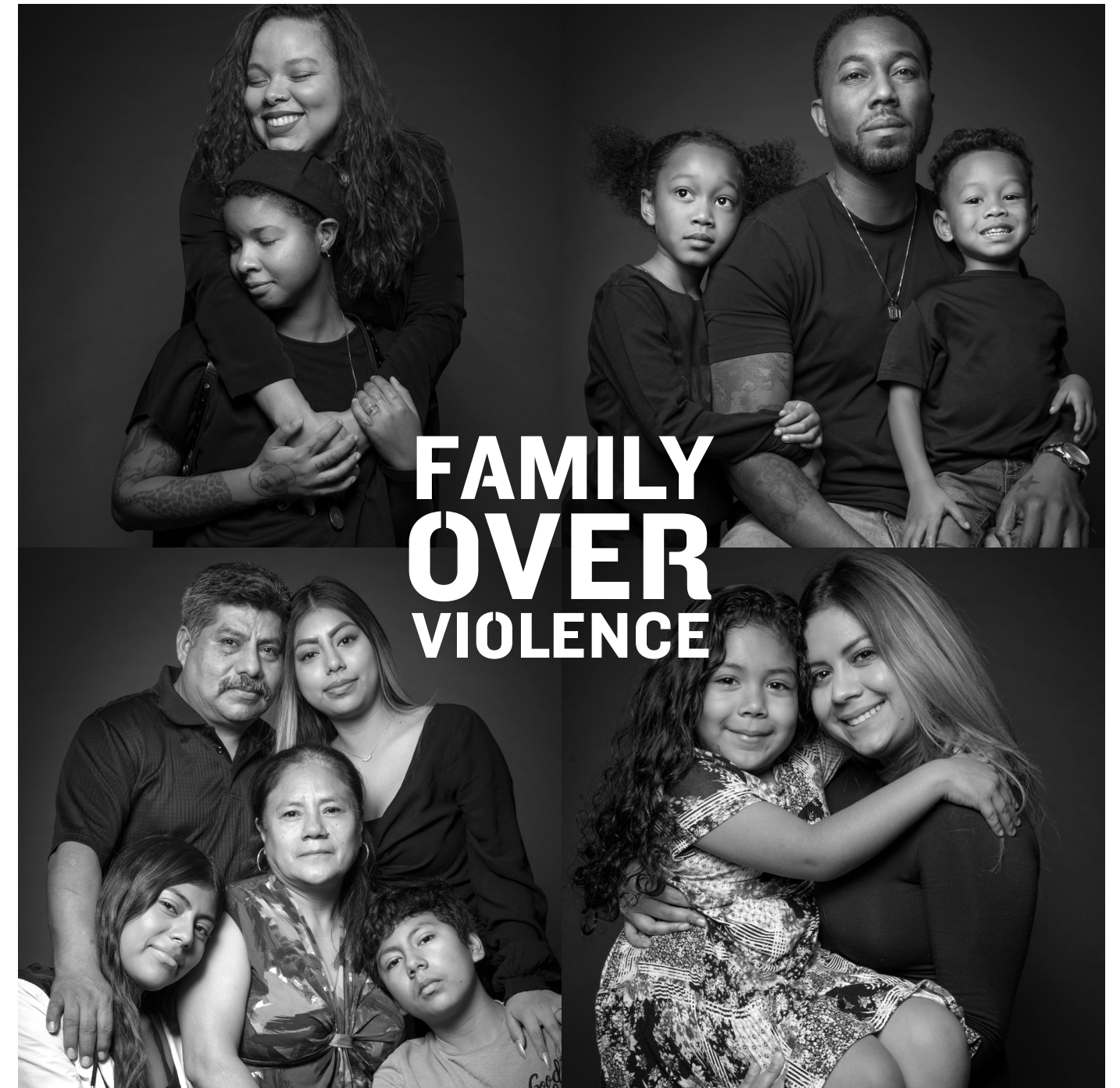
a space to connect

Connection and community building are at the core of what we do at Peace Over Violence.

Our new headquarters will create more space for:

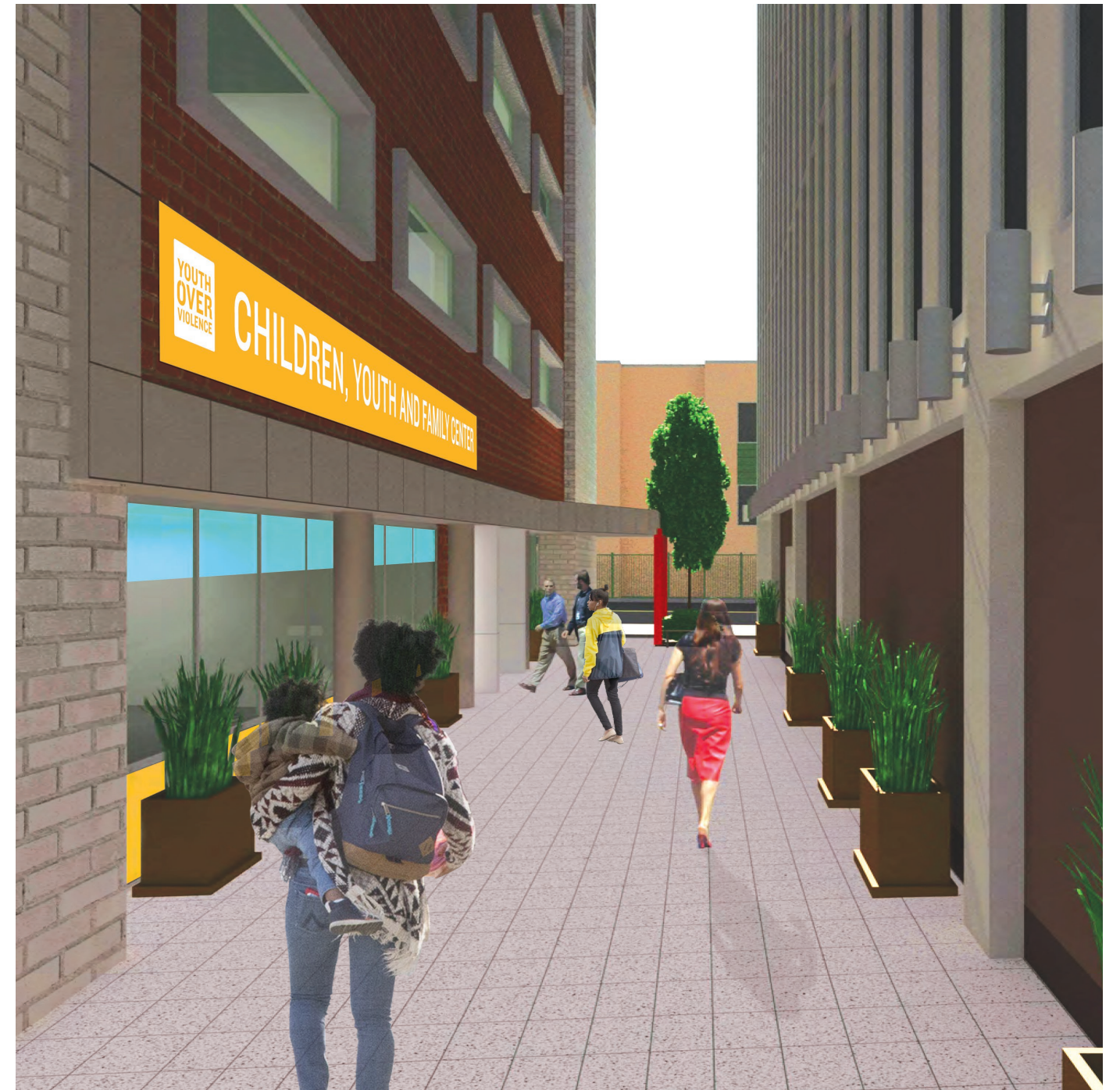
- Rebuilding trust
- Community gathering
- Learning and leadership
- Discovering creativity and innovation
- Awareness and education

Peace Over Violence's new headquarters will be a brave space housing expert and visionary programs and practitioners that not only offer treatment, but foster well-being and healing. We will challenge ourselves and our partners to move the needle forward on the critical issues impacting our communities. We will encourage and support our chosen families, given families, and our collective communities to learn about responses to trauma and offer holistic approaches to healing and violence prevention.





Wilshire at Union, Los Angeles, CA

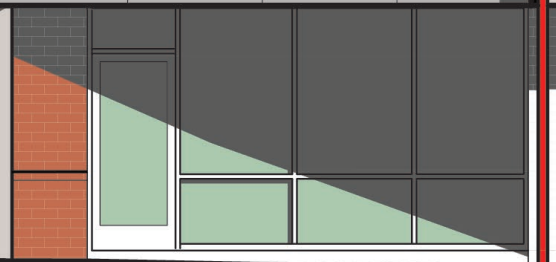
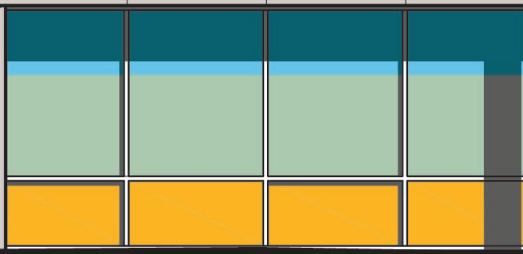
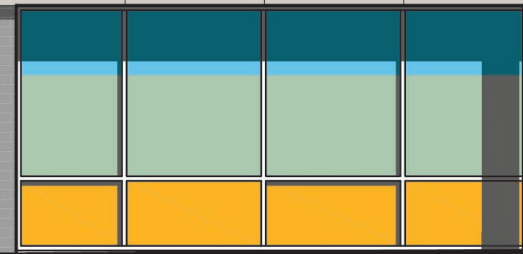




Violence is preventable.
If we can learn it,
we can unlearn it.



YOUTH OVER VIOLENCE CHILDREN, YOUTH AND FAMILY CENTER



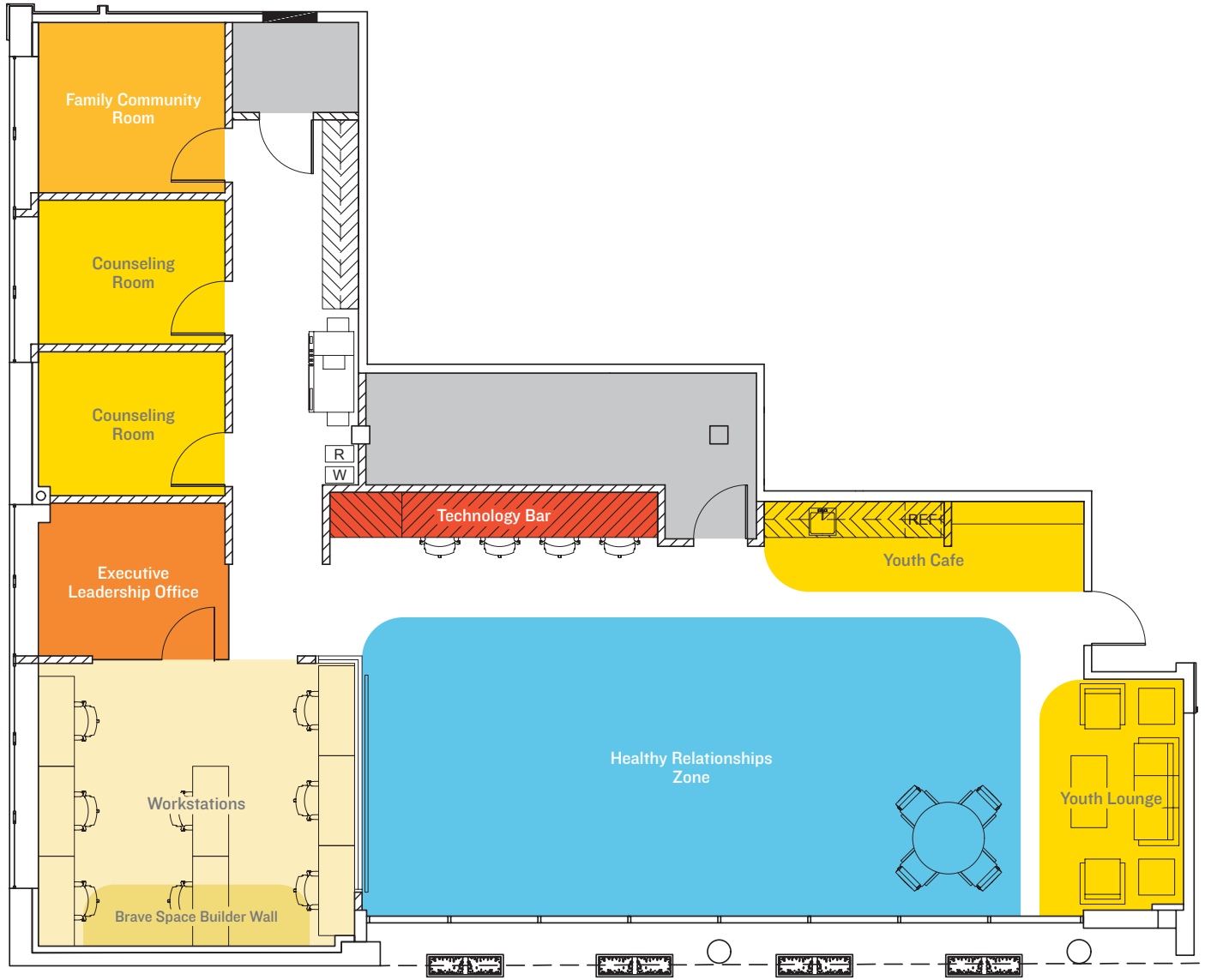
naming opportunities

Peace Over Violence Children, Youth and Family Center

Gifts can be made in the name of individual or corporate donors, or in honor or memory of a loved one.

■ Healthy Relationships Zone	50,000
■ Technology Bar	10,000
■ Executive Leadership Office	5,000
■ Family Community Room	2,500
■ Counseling Room (2)	2,000
■ Youth Lounge	2,500
■ Youth Cafe	2,500
■ Brave Space Builder Wall Recognition	500

1st Floor



naming opportunities

Peace Over Violence LA Center

Gifts can be made in the name of individual or corporate donors, or in honor or memory of a loved one.

	Community Center	50,000
	Board Room	20,000
	Patti's Corner	10,000
	Advancement Office	10,000
	POV Brand & Design Studio	10,000
	Kitchen & Staff Lounge	10,000
	Executive Leadership Offices (4)	5,000
	Welcome Lounge	5,000
	Children's Play Zone	5,000
	Program Leadership Offices (6)	2,500
	Rest & Restore Room	2,500
	Support Group Rooms (2)	2,500
	Counseling Rooms (8)	2,000
	Brave Space Builder Wall	500
	Brave Space Builder Digital Wall	250

3rd Floor



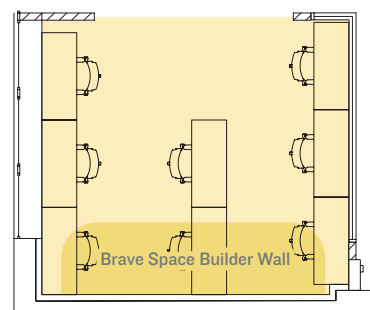
brave space builders

We invite you to become a brave space builder.

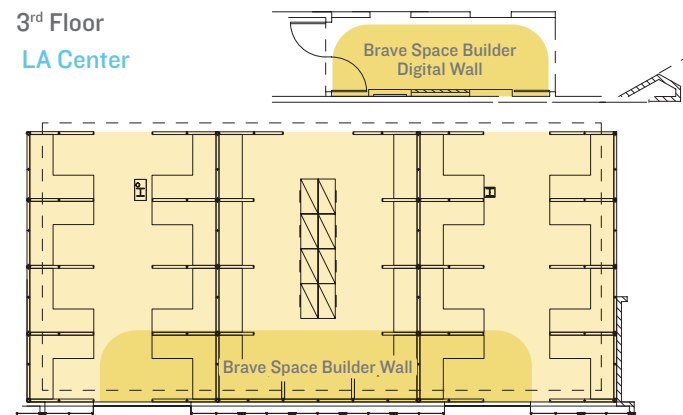
As a trauma-informed and resilience-focused agency, we are building a brave space where individuals can and will engage with one another to heal and transform. Your financial contribution will directly help fund the infrastructure needed by our expert and visionary staff to continue to foster health and well being. You will be recognized as a brave space builder and your name will live physically or digitally in our new space.

- Brave Space Builder Wall 500
- Brave Space Builder Digital Wall 250

1st Floor
Children, Youth and Family Center



3rd Floor
LA Center



building a brave space

The campaign for Peace Over Violence

Learn more at peaceoverviolence.org/bravespace or contact:
Lauren O'Hara, Manager of Donor Engagement & Individual Giving
213.955.9090
lauren@peaceoverviolence.org

peaceoverviolence.org



be brave with us